

TRANSFORMING SPACES WITH PUBLIC ART!

Site-Specific Art for Landscape & Architecture

Hi. We're Suzanne and Marcela (the Su and the Ma of SUMA).

With over 50 years of collective experience in various aspects of the visual arts, we've developed a mutual passion for creating public art.

We believe art has the power to energize our public spaces, arouse our thinking, and transform the places where we live, work, and play into more welcoming and beautiful environments that invite interaction. We love to create site-specific works of distinction that enhance, heal, unite and transform. We're inspired to create as much of this goodness as possible in the world.

We're both ridiculously organized for "artist types" and yet there's no shortage of right brain activity between us either. We're constantly learning and exploring new ways to make art. Fusing traditional fine art skills with cutting-edge technologies and a diverse range of materials such as stone, metal, tile, glass, concrete, ceramics and renewables, is what

allows us to create works that transcend the norm.

We're fortunate to have an amazingly talented network of folks around us. Our team of engineers, architects, builders, construction specialists, fabricators, equipment operators and installers allow us to think big.

We've put together this informational packet to explain a little more about the artform we love, and its possibilities. Enjoy!



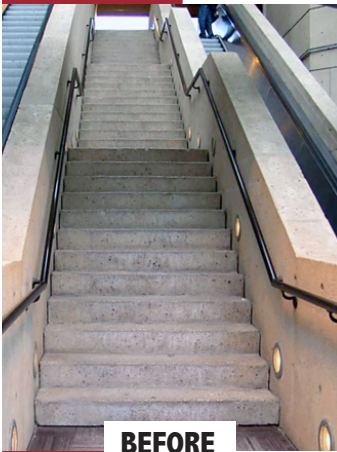
"Energy of The Arts ~ Bohemian Sophistication"
Quartz Stone Carpet, Main Lobby, UDC Auditorium

SUZANNE *Marcela*

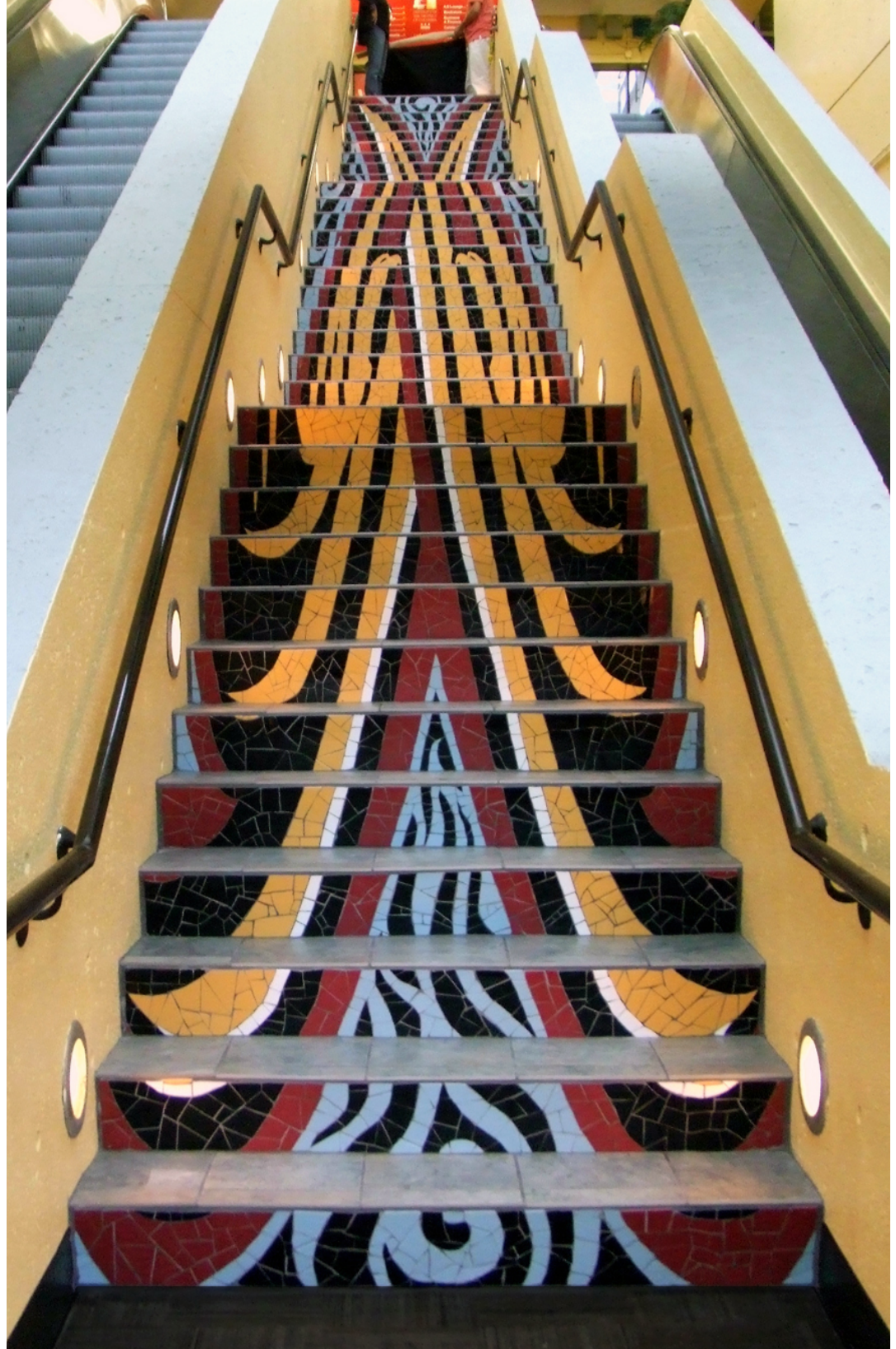
“It’s a symbolic statement of the direction of our institution. The Firebird is rising, and all of Washington, D.C. will soon be a part of this movement.”



Dr. Allen Sessoms | President | University of the District of Columbia



BEFORE



What is Site-Specific/Public Art?

Site-Specific Art is artwork created to exist in a certain place. The location is taken into account while planning and creating the artwork. Outdoor site-specific artworks often include landscaping combined with permanently sited sculptural elements. Indoor site-specific artworks may be created in conjunction with the architects of the building. The term is sometimes used for any work that is (more or less) permanently attached to a particular location.

Public Art properly refers to any work of art in any media that has been planned and executed with the specific intention of being displayed or installed in the physical public domain, accessible to all. The term is also applied to include any art which is exhibited in a public space including publicly accessible buildings. These works of art are designed to improve the public realm and contribute to place character and identity.

The scale of this art varies greatly. It can be monumental; towering several stories high, or it can be intimate; calling attention to the pavement beneath your feet. It can be cast, carved, sculpted, painted, built, fused, assembled and fabricated in a wide range of materials, styles and methods. It can be grounded, suspended or projected. The sky is the limit. Literally!

Why? Why create site-specific/public art? Because we share the philosophy that all people should have access to art. If art enriches life and helps people to think critically about social issues, it follows that art should be made public. Public art becomes part of the community, and the community becomes part of the art, interacting with it instead of just looking.

Where? Site-Specific/Public Art enhances and transforms all sorts of spaces and places, including, but not limited to:

- Architectural Structures
- Corporate Offices
- Landscapes/Gardens
- Libraries
- Museums
- Private Properties
- Streetscapes
- Schools
- Theaters
- Universities
- Airports
- Hospitals
- Communities
- Hotels



What Can Public Art do for You?

- ★ It can make strangers talk, children ask questions, and give cause to pause in a hurried life. It connects us all in a shared moment on a universal level.
- ★ It can enhance aesthetic character, invoke harmony and inspire contemplation in both architecture and open spaces.
- ★ It can heal, improve, beautify, revitalize and infuse a space with new life.
- ★ It can enhance a community's identity by creating identifiable landmarks which foster an authentic sense of place and belonging.
- ★ It has the power to enhance, improve, uplift and transform a space. A mural or a sculpture can be an effective way to create branding for your company or institution, showcasing your mission, vision and values.
- ★ Public art can be created by artists for a community, with or without community participation. It has the potential to be a source of civic engagement and inspire community building.

Case Study:

Nurture Diversity Cultivate Harmony | Mosaic Wall | Fredericksburg, VA



This 32' x 8' mosaic mural was created to promote cultural harmony through creative, artistic expression.

A nine member multicultural youth art team got together on a weekly basis for four months to create and assemble various components of the mosaic and to prepare for the week-long installation event.

Various materials, colors, textures and cultures were successfully combined to create this holistic work of art, where

one color and shape enhances the other and supports the affirming message:
"Nurture Diversity & Cultivate Harmony."

continued on page 5

Mosaic Wall | Fredericksburg, VA (continued)

When people from diverse walks of life gather together to work towards a common goal, wonderful things can happen! New personal connections develop, beauty is created, and a space is transformed by a more unified community and a shared sense of pride.

During the installation week, over 300 members of the community came together to lend a hand and to be a part of history in the making. The completion of this project was joyous. The City of Fredericksburg blocked off several streets to celebrate the unveiling of their new landmark. The Mayor applauded the project as over 500 people celebrated this great community accomplishment with food, stories, live music and dance.

BEFORE



DURING



AFTER



There is a great deal of evidence that art has a therapeutic value in hospitals. The shapes, colors and atmosphere created by paintings, murals, sculptures and installations have a beneficial effect on patients, by stimulating, soothing, or creating an appropriate 'feel' for an area.

Case Study:

Tree of Life | Washington, D.C.

This installation was created with respect for the beloved children of the HSC Pediatric Center. We were inspired to have this installation convey a sense of reverence, whimsy, reflection, hope, transformation and peace to all its viewers.

The mosaic mural is made from handmade ceramic tiles, commercial tiles and glass. The ceramic leaves are embedded with the names of the children whose lives are commemorated. The rainbow children symbolically hold their hands out for others who have gone before them, and to those who will need a guiding hand in times to come. The mirrored pieces that twinkle throughout the mural are lovingly referred to as "soul spirits." They allow viewers to reflect upon themselves as they become an integral part of the mural, the timeless memories, and the landscape of the beautiful, transformational butterfly garden.

"WOW! WOW! WOW!"

When I came in to work this morning there were some difficult issues going on. Then I saw the mural! I could look at it forever! There is so much detail... I love the mirrors, the textures of the kids, the color, the sun, the outlines, the way the names on the leaves look timeless... and I have just started to look at it!

Can't wait to meditate on each name, each child that I have known, their families, the care given to them. You both are so wonderful! You just don't even know what you have given to us with this work. I can't wait to share it with the families, with the other staff...

It is everything I had hoped for!"

Linda Crocker, LICSW
Director of Collaborative Care
The HSC Pediatric Center



“ENERGY OF THE ARTS” Integrated Design Plan

Establishing a cohesive and contemporary visual identity for the University, the UDC Theater of the Arts and the Community...

This plan consists of three interdependent, site-specific, designs. Each work features stylized imagery and elements of the ARTS: music, performance, dance and theater.



The sculptural metal frieze measures 85' long x 6' high and transforms the UDC Theater of the Arts building. The design elements, in silver and black, complement those found in the quartz stone carpet located in the front lobby and the exterior sculptural wall of the arts which leads up to the main entrance. 4' tall classic art deco letters identify the new UDC Theater of the Arts site.



The 130' x 11' **sculptural wall of the arts** replaces an old wooden fence and curves both vertically and horizontally. The designs are woven into this whimsical design in vibrant colors, classic black and white, and shades of gray. The wall also conceals industrial equipment behind it, and serves as an artistic backdrop for the plaza of the arts. The grassy area accommodates outdoor seating for special functions.

The 15'x12' **quartz stone carpet** welcomes patrons into the front lobby of the Theater. This elegant and distinguished work of art was created by utilizing over 3,000 pounds of engineered quartz stone, precisely cut into 250 interconnected pieces.



SUMA Works!

...with a variety of clients, including, but not limited to:

- Architects
- Builders & Developers
- City Planners
- Corporate Art buyers
- Designers
- Hotels & Restaurants
- Hospitals & Medical Facilities
- Landscape Architects
- Offices of Facilities & Real Estate
- Homeowners



Each project we work on is unique and designed specifically for our clients and their sites. We also understand the need for our clients to have a general outline of the steps involved in commissioning a project. This guide can be downloaded from our web site or by clicking here on the Commission Guide.

Can This Art Work for You?

★ If you're inspired to transform a space with site-specific public art, or if you just have a vision that you'd like to explore further, we'd love to talk with you about the possibilities!

Contact SUMA:

- ★ email: suma@sumaworks.com
- ★ phone: 540.841.2580 or 703.403.1785
- ★ fax: 202.315.3990
- ★ web site: www.sumaworks.com

SUMA Design & Tile Works, LLC is a licensed and insured company, based in the Washington, D.C. area.

SUMA accepts commissions nationally & internationally.

